



联
华
小
学

Lianhua Primary School

Welcome 2026 P1 Students



P1 Orientation

21 November 2025

Programme Highlights

- Welcome address – Principal
- School Admin and Safety matters – VPA
- Admin matters for parents - YH
- Transition & Student matters – YH
- Home-school partnership – VP
- Parent Support Group sharing – PSG





联
华
小
学

Lianhua Primary School

Welcome 2026 P1 Students



Welcome Address by Principal, Ms Pamela Kiew

Principal's Address

- To our **Primary 1 Superheroes** - Today marks the start of a **grand adventure**. You're about to embark on six years of learning, growth, and discovery. It is going to be **amazing**.
- I want you to know that it's okay to feel nervous. Everyone here - your teachers, the staff, and even the older students are here to help you. **This school is going to be your second home, and we're all one big family.**



Principal's Address

- To all **Parents and Guardians**: Thank you for entrusting us with your children's education. We understand the significance of this moment and the responsibility we bear. Rest assured, we are **committed to nurturing your child's potential and helping them thrive.**
- Parents, your children are about to spread their wings. There might be a few wobbles along the way, but **together, we'll help them soar.**
- This is a partnership. We encourage **open communication** between home and school. If you have any questions or concerns, please don't hesitate to reach out to us.



Principal's Address

- Once again, welcome to Lianhua Primary, where every child matters and **every day is an opportunity to learn something new.**
- Let's begin this wonderful journey together and make this **an incredible year of growth, learning, and fun!**



Our Lianhua Family – Our School Leaders



Ms Pamela Kiew
Principal



Mdm Janice Tan
Vice-Principal



Mrs Mavis Low
Vice-Principal



Mr Jeffrey Lee
Vice-Principal
(Admin)



Our Lianhua Family – Our Year Heads



Ms Christina Hoon
Year Head P1&2



Ms Irfana Banu
Year Head P3&4



Mrs Samantha Soh-Lee
Year Head P5&6



Mrs Angeline Hoh
Assistant Year Head P1&2



Mdm Shanice Pek
Assistant Year Head P3&4



Mrs Prabu
Assistant Year Head P5&6



Our Lianhua Family – Key Personnel



Mdm Juliswati
HOD English



Ms Tan Li Yan
HOD Mother Tongue
(Covering)



Mrs Alexis Pua
HOD Math
(Covering)



Mrs Sally Yeo
HOD Science



Mdm Shanthini
LH English



Mdm Subathra
LH Malay/Tamil



Mrs Brenda Sim
LH Science



Mrs Nonis
LH Science



Our Lianhua Family – Key Personnel



Ms Sheena Foo
HOD Student
Management



Mr Vincent Low
HOD Character &
Citizenship Ed



Ms Jagjit Kaur
HOD 21CC/High
Ability Learners



Mdm Khilfina
SH Student
Well-Being



Mr Ramadhan
SH Character &
Citizenship Ed



Mr Sim Wee Choon
SH Character &
Citizenship Ed



Mdm Seri Rahayu
SH Infocom &
Technology



Our Lianhua Family – Key Personnel



Ms Lim Siew Chin
HOD Physical Ed
& CCA



Ms Ho Si Hui
SH CCA/Outdoor
Education



Mdm Lee Gim Fang
SH Aesthetics



Mdm Kuan Suan Shi
SH Partnerships



Mdm Chan Siew Hoon
Admin Manager



Mr Alagappan
Operations Manager



Mr Goh Yoon Sin
Operations Manager





联
华
小
学

Lianhua Primary School



Vision, Mission, Motto and Values

School Vision

Hearts of Service
Minds of Inquiry
Joy in Learning
Confidence in Life

School Mission

Together we bring out the best
in every child for a better nation

School Motto

Play Passion Purpose

School Values

- P1 - Discipline
- P2 - Respect
- P3 - Compassion
- P4 - Integrity
- P5 - Unity
- P6 - Resilience





- ✓ **Passionate Learners**
- ✓ **Critical and Creative Thinkers**
- ✓ **Confident Communicators**
- ✓ **Exemplary Leaders**



Student Development and Well-being

Superheroes and their Sidekicks



Joyful Jaya
Happy and helpful
Loves learning
Cares for Mother Earth

Superpet Octo
Organisational Skills
Focused Attention



Sensible Sumei
Caring
Kind
Helpful

Superpet Sheldon
Emotional Control
Impulse Control



Confident Colin
Natural leader
Good role model
Fast and strong

Superpet Leo
Plans tasks well
Completes tasks
dutifully



Inquisitive Ismail
Curious
Courageous
Knowledgeable

Superpet Owley
Open to change
Good memory
Thinks about own thinking



A Story



A Story – Audience Participation



You pick your child from school one day and your child tells you that his entire school bag has gone missing.

What would you do immediately?

- a) Scold your child and worry that homework for the day cannot be completed
- a) Call the teacher/ office to activate a search party
- a) Celebrate. No need for homework supervision that day!



A Story



What you might want to consider doing:

- Be calm
- Teach child to track where he/ she had gone or may have left the bag.
(Classroom, canteen, General Office)
- Inform school/ Form Teacher about the missing bag
- Have a conversation about the possible scenarios and how child should react

1) What if someone took your bag as a prank?

2) What if someone took your bag and hid it because he/she is upset with you?

3) What if it was a mistake?

4) What would you do moving forward?



This applies to all situations and scenarios



Space for thinking,
for feeling, for
processing.



To learn about, and
practise **kindness**,
responsibility,
resilience and **grace**



Some Advice

#SpineHack: Wearing a Backpack



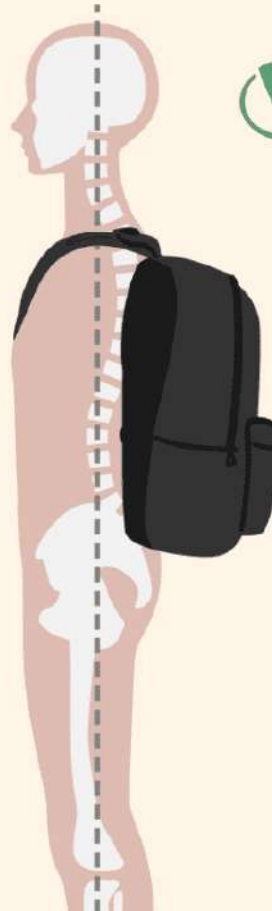
RIGHT:
Standing up
straight with
both straps
in place



WRONG:
Slouched,
one-shoulder
hold



 spinehealth.org





联
华
小
学

Lianhua Primary School

Welcome 2026 P1 Students



Admin & Safety Matters by
Vice-Principal (Admin)
Mr Jeffrey Lee

Guiding Principle

- Everyone plays a part in the **Safety & Well-Being** of our Students and Staff.

Health & Safety Tips

- If your child is unwell, do inform the form teacher or call the general office at **6563 9502**.
- Do provide the medical certificate or a letter to the form teacher upon the child's return to school.
- Your child should put on a mask if he/she is feeling unwell.
- Keep spare masks in your child's bag in case he/she needs it.



VISITATION POLICY

- All visitors are required to comply with our school visiting hours.
- Visitors are not allowed to go beyond the General Office without an accompanying school staff/security officer.
- **All other school premises including the canteen, hall, field and classrooms are strictly out of bounds to all visitors.**
- Visitors who do not comply with the visitation policy after two reminders may be denied entry into the school or be escorted to the General Office by our security officers.

The safety of our students and staff are our priority!



VISITING HOURS

Venue	Purpose	Visiting Hours
Bookshop	Buy books/ stationery/ uniform	1.45pm to 3.00pm
General Office	Meeting with teachers/ school staff	By appointment only
	Pick up child who is unwell or has approval to leave school early	Ad hoc
	Late pickup of child during dismissal	After 1.45pm (walk in) After 1.45pm (driving)



MORNING ARRIVAL

- Children who walk to school are to enter by either Main Side Gate or Back Gate.
- Parents do not enter the school.



Main Side Gate Opening hours:
6.30am – 6.30pm



Back Gate Opening hours:
6.30am – 7.45am
1.15pm – 2.00pm
3.00pm – 5.30pm



MORNING ARRIVAL

- Parents who drive their children to school are to drop them off at the school foyer only and drive off immediately. (Do not stop at the Bus Bay)
- Parents will be allowed to drive in from 6.30am to 7.30am.



MORNING ARRIVAL

For a smoother traffic flow for all:

- Get your child to **be ready to alight** from the **left side** of the vehicle when approaching the drop-off point.
- Follow the instructions given by the security officers and traffic wardens on duty.
- Parents, **avoid alighting from your vehicle** to open your vehicle door for your child **or long goodbyes**.
- Peak timing to avoid: 7.10am - 7.30am.
- Alternatively, you can drop your child off at the HDB carpark across the school.
- Be Patient and Be Considerate.



SCHOOL DISMISSAL


4 Dismissal Points: (P1 Dismissal from 1.20 pm)

- ❖ **Main Side Gate:** Parents/caregivers to wait across the road from the school.
 - ❖ **Back Gate:** Parents/caregivers to wait in front of the gate.
 - ❖ **School Bus:** Students to assemble in the canteen.
 - ❖ **Big Hearts SCC:** Students to assemble in the canteen.
- Indicate the Dismissal point for your child in the Pupil Data Form. Provide all contact numbers.
- **No driving into the school between 1.15 pm and 1.45pm as the students will be boarding the school buses.**



SCHOOL DISMISSAL

Main Side Gate

- Wait **across the road.** 
- Prioritise safety by respecting traffic signals
- Staggered dismissal
 - P1: **1.20pm** (Pick your child when the class is called)
 - P2: 1.25pm
 - P3 - P6: 1.30pm to 1.40pm (Students will walk across the road)
- After 1.45pm, pick your child from the General Office.



SCHOOL DISMISSAL

School Bus

- Pupils taking school buses will queue up and **wait in the Canteen**.
- Bus drivers will bring them to their buses.
- Please make sure your child has the **bus tag** on his school bag and remembers the **school bus number**. Indicate the bus number on the Pupil Data Form.





联
华
小
学

Lianhua Primary School

Welcome 2026 P1 Students



Administrative Time for Parents

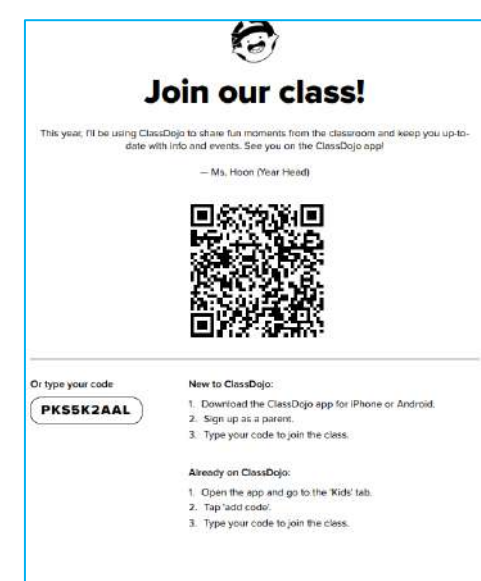
Are you on board?



ClassDojo



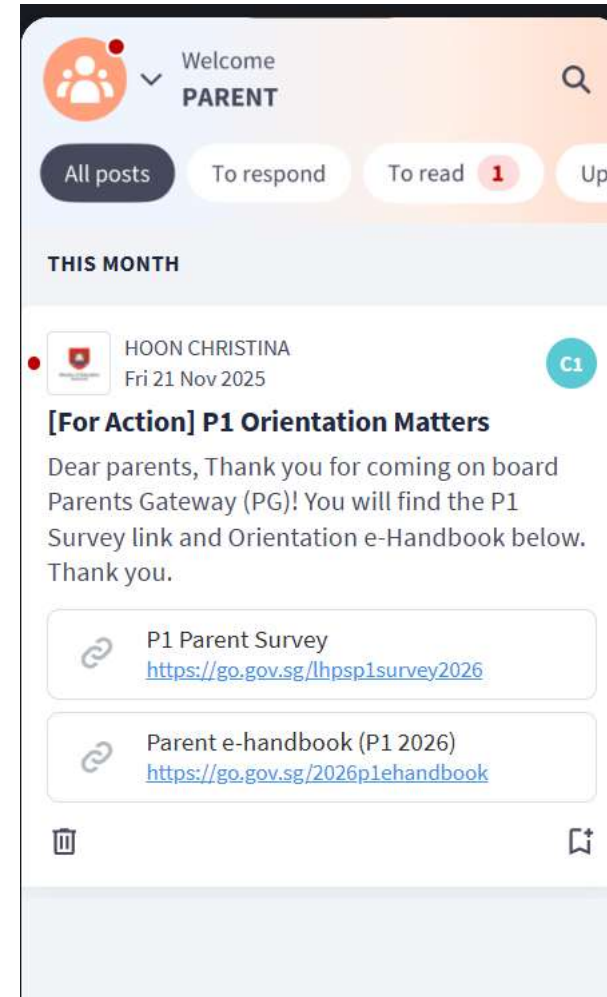
1. Scan the QR code on the parent code slip.
2. Join the class.
3. Send a “Hi” to Ms Hoon.
4. Read Ms Hoon’s message in Story.



Are you on board?



1. Click the notification “P1 Orientation Matters”



1. Click “P1 Parent Survey”.

[For Action] P1 Orientation Matters

21 NOV 2025, 1:19AM • HOON CHRISTINA

 EDISON CHEE

DETAILS

Dear parents,

Thank you for coming on board Parents Gateway (PG)!

You will find the P1 Survey link and Orientation e-Handbook below.

Thank you.

LINKS



P1 Parent Survey

<https://go.gov.sg/lhpsp1survey2026>



Parent e-handbook (P1 2026)

<https://go.gov.sg/2026p1ehandbook>





Ministry of Education
SINGAPORE

Help Us Get to Know Your Child Better – P1(2026) Parent Survey

🕒 15 mins estimated time to complete

Instructions

Dear Parents/Guardians,

As part of our efforts to ensure a smooth and positive transition into Primary 1, we would like to invite you to

20 min





联
华
小
学

Lianhua Primary School

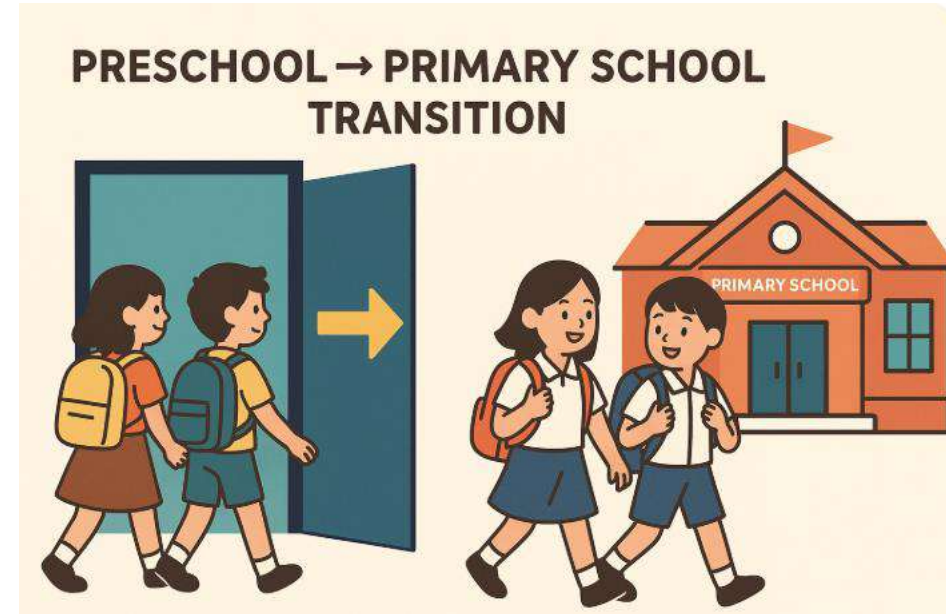
Welcome 2026 P1 Students



Smoothening Transition into Primary One
Year Hear Lower Primary
Ms Christina Hoon

What is Transition?

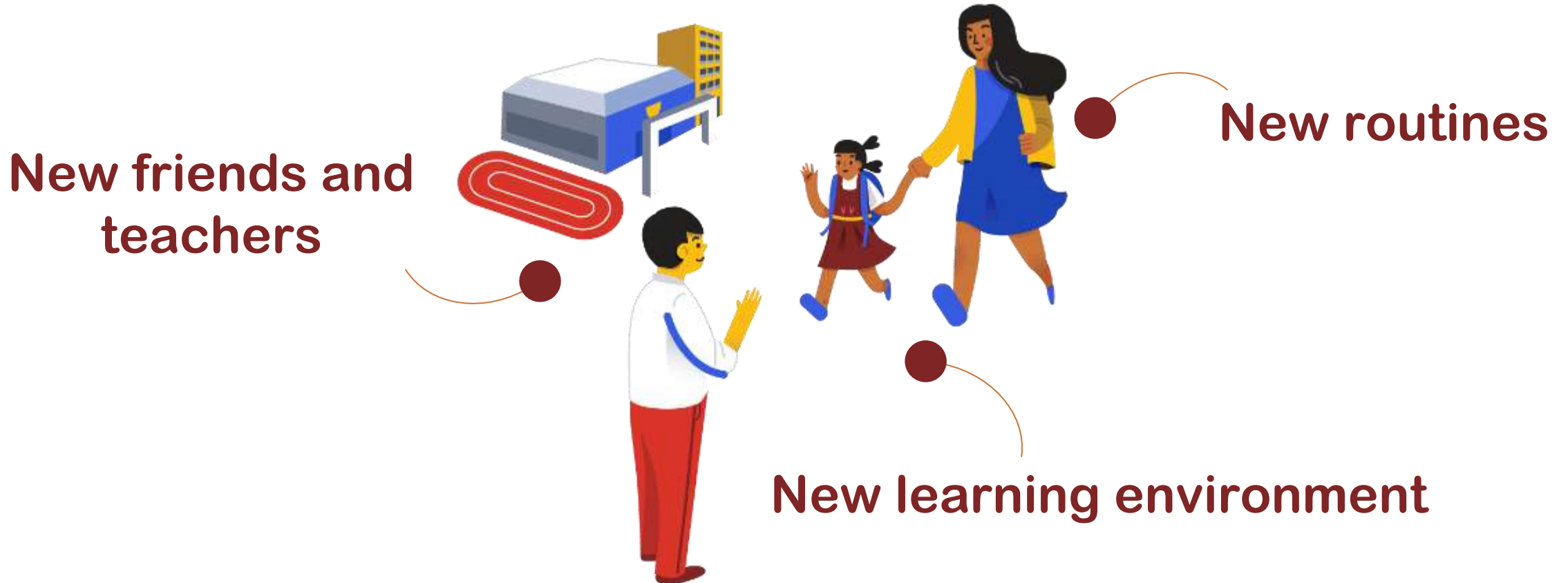
Helping the child adjust from
preschool to primary school



Feeling safe confident and ready
for new routines

Smoothening the transition to Primary 1

When your child enters primary school, their experience will include:



Why is smooth transition important?

Feel happy and secure in school

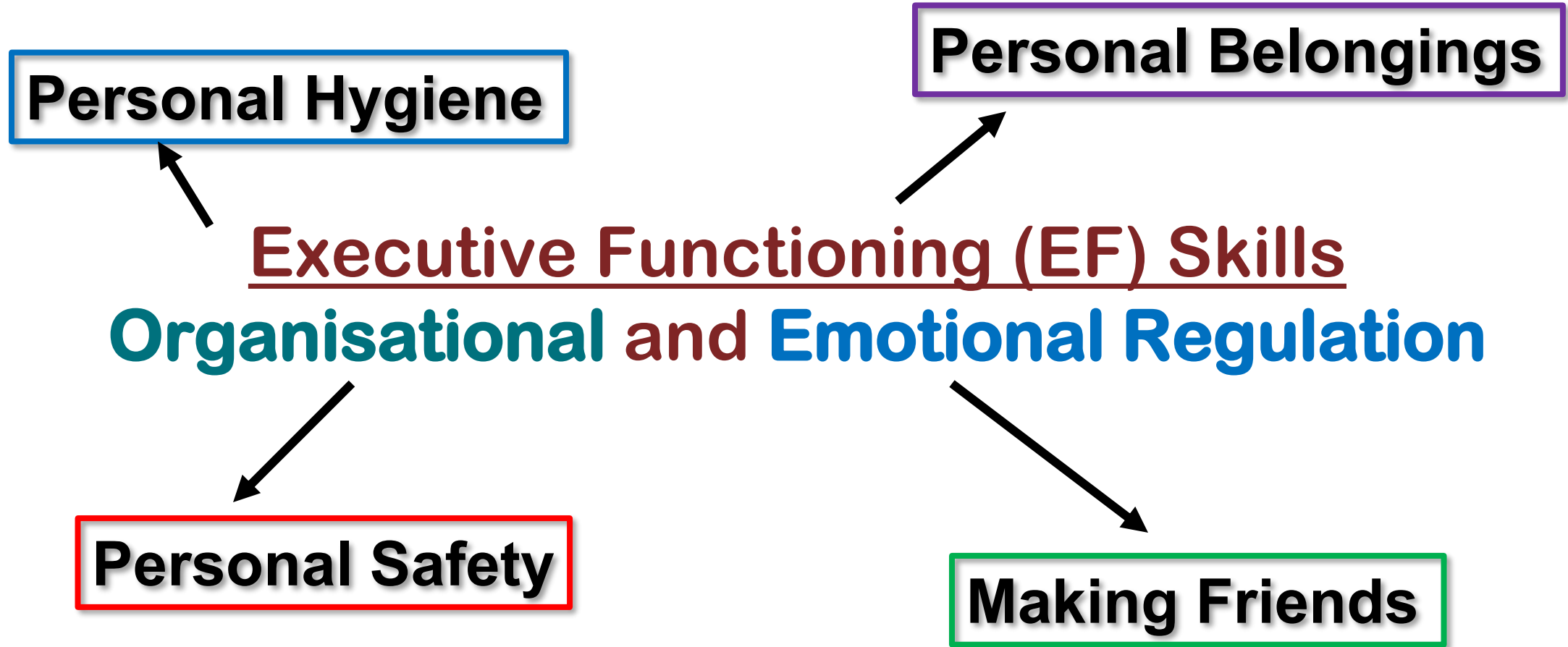
Follow routines independently

Focus better in class

Make new friends

Enjoy learning

At Lianhua Pri, we want to focus on ...



Personal Hygiene

Examples: washing hands, using the toilet, keeping clean

EF Link: Organisational Skills

- Children must remember *when* to wash hands (after toilet, before eating).
- They learn to follow steps in sequence (soap → wash → rinse → dry).
- They take responsibility for keeping themselves clean.

EF Link: Impulse Control / Emotional Regulation

- They wait their turn at the sink.
- They learn not to rush, even when excited or distracted.
- They stay calm and follow routines even when they prefer to play.

Parents: Teach a simple handwashing routine (soap → scrub → rinse → dry) or provide tissues/handkerchief and practise using them



Personal Belongings

Examples: keeping track of water bottle, books, bag, pencil case

EF Link: Organisation Skills

- Children learn to pack and check items independently.
- They remember what belongs to them and where items should be kept.
- They develop responsibility through simple routines (“Before I leave, I check my things are with me.”).

EF Link: Impulse Control

- They learn not to throw or misuse belongings.
- They slow down to check items properly instead of rushing.

Parents: Label all belongings, set up a spot for bag and homework or encourage: “Let’s tidy your bag before bedtime.”



Personal Safety

Examples: walking safely, asking for help, staying within school areas

EF Link: Impulse Control

- Children learn to stop, think, and choose safe actions.
- They practise waiting (e.g., at stairs, in queues).
- They manage excitement and avoid acting without thinking.

EF Link: Organisation Skills

- They remember safety rules (walk, not run; stay with class).
- They plan their movements and follow routines confidently.

Parents: Role-play “Ask a teacher for help” or teach safe ways to handle crowds/stairs



Making Friends

Examples: sharing, taking turns, greeting others, using kind words

EF Link: Impulse Control / Emotional Regulation

- Children learn to wait, take turns, and manage frustration.
- They practise using words instead of reacting impulsively.
- They learn to calm themselves during disagreements.

EF Link: Organisation Skills

- They follow simple social routines (greet → play → tidy up).
- They remember classroom expectations (kind words, gentle hands).

Parents: Model sharing & turn-taking or teach simple phrases:

- “Can I play with you?”
- “Can we share?”
- “It’s okay, let’s try again.”



Relating Well to Others

Build your child's interpersonal skills by:

01

Modelling the use of friendly and polite phrases

"Hi! My name is...What is your name?"

"Could you help me with..."

02

Providing opportunities for your child to share and take turns during playtime with other children

03

Modelling respectful interactions

"May I please..."

"It's okay if I can't join in..."

"I am sorry I ..."

MAKE NEW FRIENDS

What your child may learn in school

JOINING IN ACTIVITIES

1. Choose a good time.
2. Look at the person.
3. Ask in a friendly way, "Hi, may I join you?"
4. Accept the answer by saying, "Thank you" or "Okay".

What you can do at home

SAY HELLO AND SMILE

Hi!

My name is ...!

Practice skill steps with your child to help her/him relate with others and make friends easily. Encourage them to say hello, greet good morning and smile at their new friends and teachers. These greetings are a great way to connect with people.

Do a short role-play with your child to practise these steps for joining in activities:

- saying hello with a smile and introducing him/herself
- asking politely if he/she can join the group
- thanking them for choosing to include him/her
- saying and feeling okay even if they choose not to

Are you excited to meet your new friends? What do you do or say when you meet your new classmates or join them in group activities? Let's try it!

Quick Info:

- The Programme for Active Learning (PAL) helps your child to discover his/her interests and how to relate and work with peers through Sports and Games, Outdoor Education, Performing Arts (Dance, Drama and Music) and Visual Arts.

Explain how doing the above helps him/her to:

- make others feel comfortable
- prevent conflict with new classmates
- be confident

Read more: <https://www.schoolbag.sg/story/how-to-help-your-child-ace-the-first-week-of-school>



Find out more activities from the **P1 Parent-Child Role Playing Activity Kit**

These everyday habits help children:

- Build independence
- Stay focused in class
- Manage emotions better
- Settle smoothly into P1 routines
- Form positive relationships
- Develop confidence in new situations

Together, they strengthen the EF foundations needed for successful learning in primary school.



Parent- Child Activity Book is readily available online:

10 TIPS FOR PARENTS to help you navigate your child's first year in primary school.

Chat with your child
Boost their confidence
Practise various scenarios
Create something interesting
Thank others for their help
Pledge to do things together





联
华
小
学

Lianhua Primary School

Welcome 2026 P1 Students



Student Matters


2026 P1 Discipline Classes

- 1 Discipline 1
- 1 Discipline 2
- 1 Discipline 3
- 1 Discipline 4
- 1 Discipline 5
- 1 Discipline 6
- 1 Discipline 7



Name-tag & lanyard (colour-coded by class)

(will be issued to students on 2 Jan 2026)

	1 Discipline 1	
	TAN SU MEI	
Dismissal Arrangement:		
<input checked="" type="checkbox"/> Front Gate	<input type="checkbox"/> Back Gate	
<input type="checkbox"/> School Bus	<input type="checkbox"/> Student Care Centre	



2. Click “Parent e-handbook (P1 2026)”

[For Action] P1 Orientation Matters

21 NOV 2025, 1:19AM • HOON CHRISTINA

 EDISON CHEE

DETAILS

Dear parents,

Thank you for coming on board Parents Gateway (PG)!
You will find the P1 Survey link and Orientation e-Handbook below.

Thank you.

LINKS



P1 Parent Survey

<https://go.gov.sg/lhpsp1survey2026>



Parent e-handbook (P1 2026)

<https://go.gov.sg/2026p1ehandbook>



LIANHUA PRIMARY SCHOOL



PARENTS E-HANDBOOK



(P1 2026)



Content

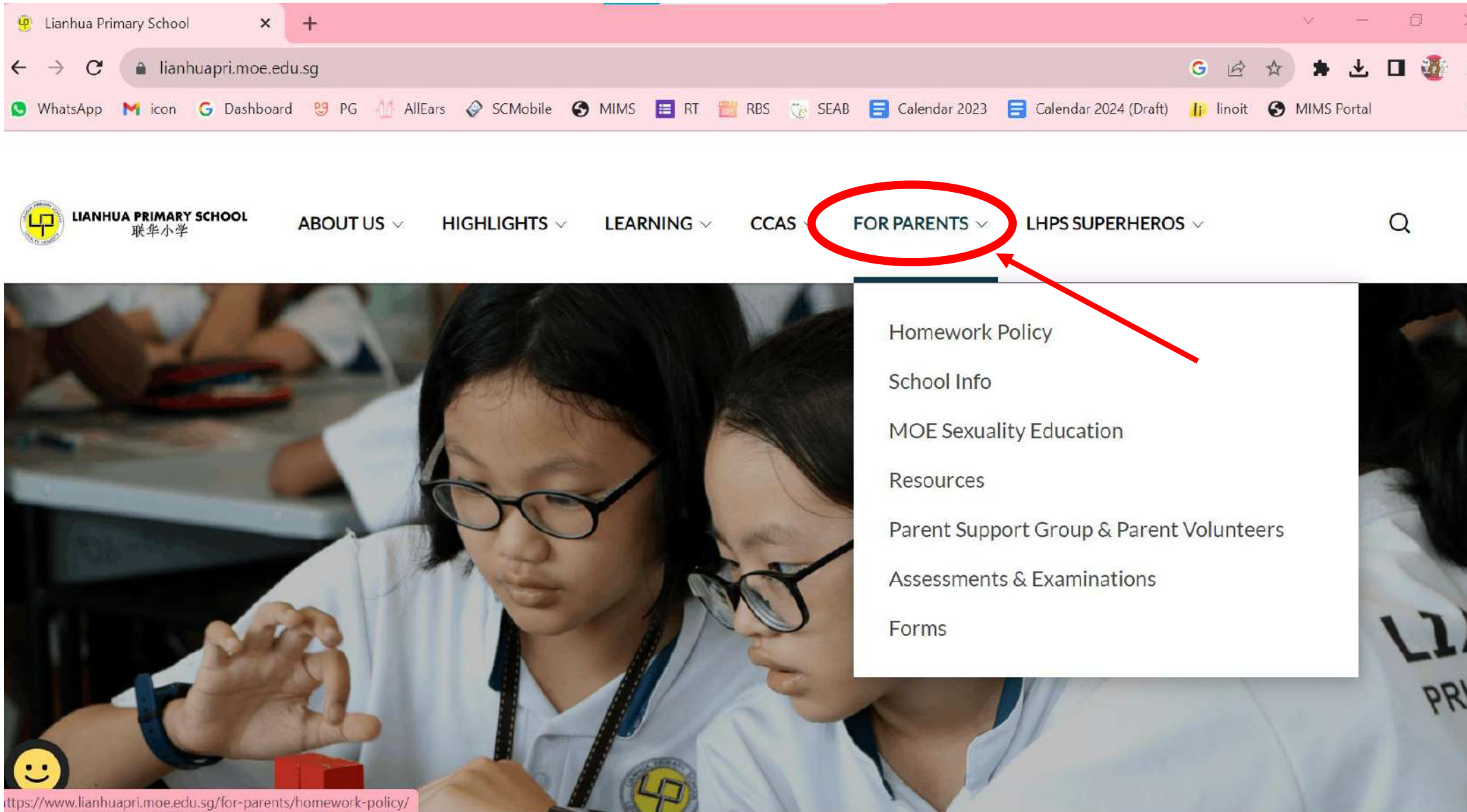
1. Welcome	2
2. Important Information (To-do-list)	3
3. First Day of School for P1 Students	5
4. School Information	7
a. Useful Contact	
b. School hours	
5. School Expectations	9
a. Communication with School	
b. Attendance & Punctuality	
c. Safety & Security	
d. Attire & Appearance	
6. Getting My Child Ready for P1	12
a. Transition	
b. What Parents Can Do at Home	
c. Helping Your Child to Transit Better	
d. Handling Separation Anxiety	
e. How School Supports Your Child	
7. Useful Videos & Resources	17



Name tag



<https://www.lianhuapri.moe.edu.sg/>



The screenshot shows the Lianhua Primary School website. The browser's address bar displays [lianhuapri.moe.edu.sg](https://www.lianhuapri.moe.edu.sg/). The website's header includes the school's logo and name in English and Chinese, followed by navigation links: ABOUT US, HIGHLIGHTS, LEARNING, CCAS, **FOR PARENTS** (circled in red with a red arrow pointing to its dropdown menu), and LHPS SUPERHEROS. The dropdown menu for 'FOR PARENTS' lists the following items: Homework Policy, School Info, MOE Sexuality Education, Resources, Parent Support Group & Parent Volunteers, Assessments & Examinations, and Forms. The background of the website features a large image of two students working on a project, with smaller images on the right side showing students in costumes and participating in activities.

<https://www.lianhuapri.moe.edu.sg/>

FOR PARENTS

- Homework Policy
- School Info
- MOE Sexuality Education
- Resources
- Parent Support Group & Parent Volunteers
- Assessments & Examinations
- Forms



联
华
小
学

Lianhua Primary School

Welcome 2026 P1 Students

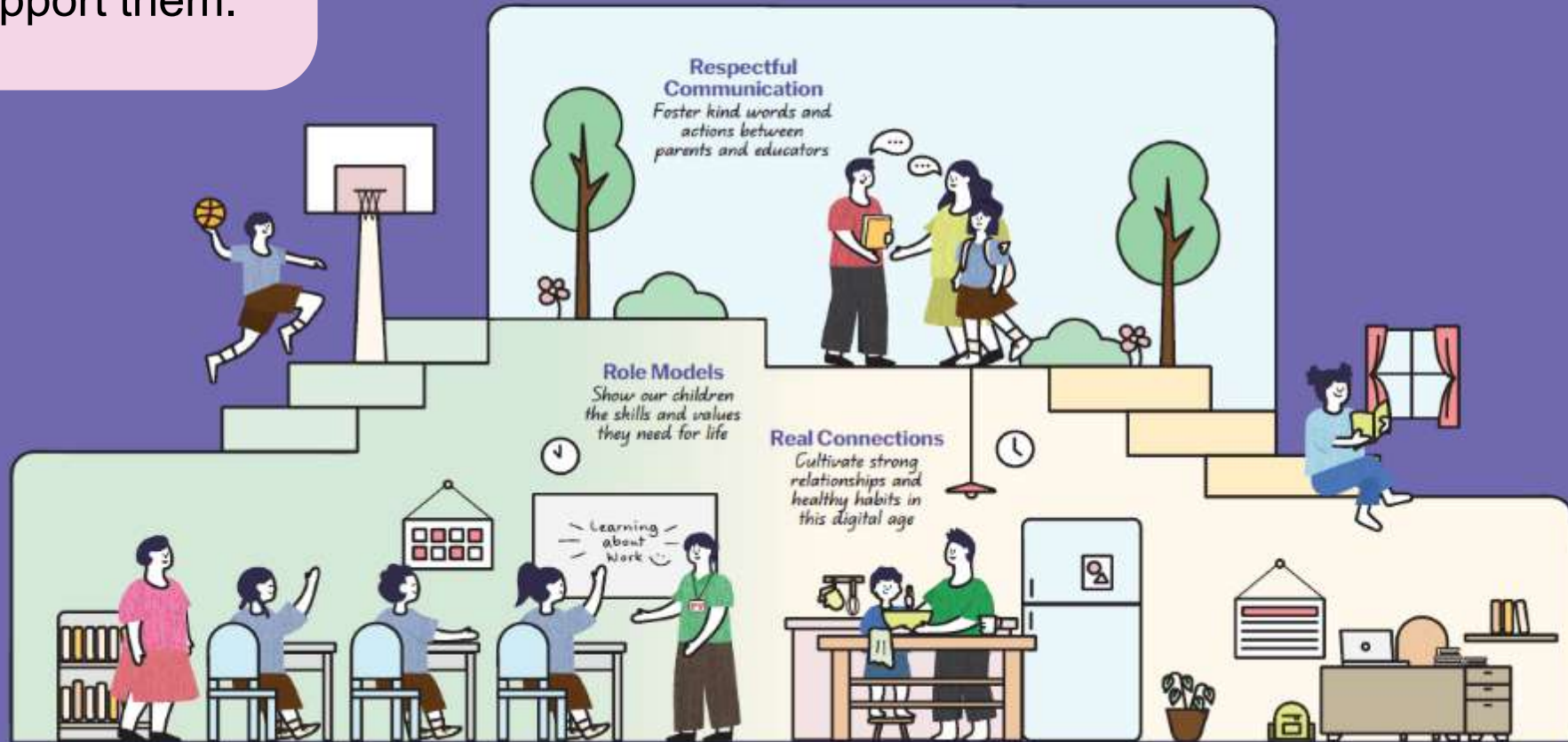


Home-School Partnership
Mdm Janice Tan
Vice-Principal

Our children do best when schools and parents work hand in hand to support them.

Guidelines for School-Home Partnership

Raising a Happy, Confident, and Kind Generation Together



A joint effort in 2024 by
the Ministry of Education and COMPASS

3 areas we can work together on to foster School-Home Partnership

1 Respectful Communication

2 Role Models

3 Real Connections



Respectful Communication

Foster kind words and actions between schools and educators



Listen to and understand each other's perspectives and concerns regarding each child



Communicate kindly using official channels. Teachers are not required to share their personal mobile numbers



Respect each other's time by communicating during working hours



Note for schools: For more information that can be included in this section, please refer to the notes section.

Role Models

Show our children the skills and values they need for life



Find joy in everyday experiences with our children



Instill confidence by encouraging responsibility and believing in our children's abilities



Model good values in words and actions



Check out this video on MOE YouTube for tips on how parents can support the social-emotional learning of their children.

Note for Schools: For more information that can be included in this section, please refer to the notes section.

Real Connections

Cultivate strong relationships and healthy habits in this digital age

Establish good habits for our children to stay confident and in control of their technology use

Build strong bonds through shared experiences and meaningful conversations



Provide a balanced mix of engaging online and offline activities, at school and at home



Check out the refreshed Guidance on Screen Use in Children by MOH.





联华小学

Lianhua Primary School

Welcome 2026 P1 Students



**Parent Support Group Sharing
by Subject Head Partnerships,
Mdm Kuan Suan Shi**

SCHOOL-HOME PARTNERSHIP

Our children do best when schools and parents work hand in hand to support them.

Parents Support Group (PSG)

Seminars/Workshops for Parents



<https://www.moe.gov.sg/-/media/files/news/press/2019/guidelines-for-school-home-partnership.pdf>

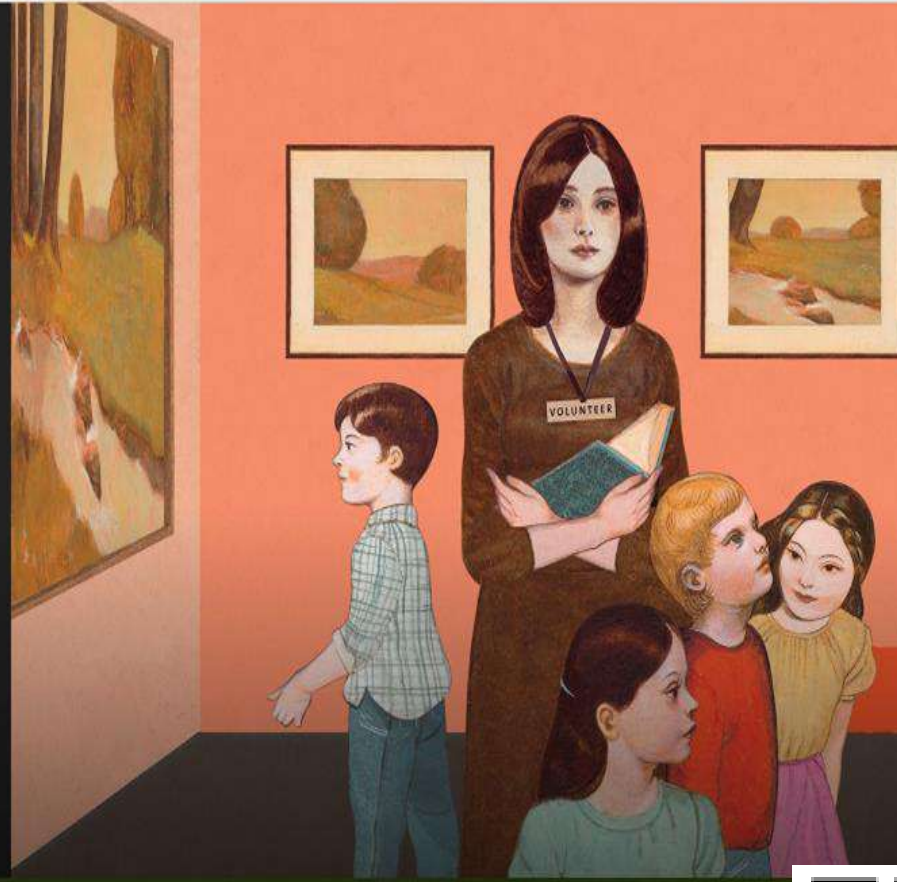




MANAGEMENT & CAREERS

Parents Volunteering at School Should Tailor Skills to Different Stages

Fewer parents are volunteering at their children's schools just as new research shows it yields benefits from better grades to lower rates of depression



<https://www.wsj.com/articles/parents-volunteering-at-school-should-tailor-skills-to-different-stages-1533134808>



Working with Fei Yue Family Centre

TRIPLE P

Positive Parenting Program

It aims to give parents the skills they need to build strong family relationships, prevent behavioural and emotional problems.

Sessions are delivered via:

- Seminars
- One to One Consultations
- Groupwork



Signposts

For Building Better Behaviours

It aims to support families with children with difficult behaviours including children with developmental needs.

Delivery format:

- Small group of parents
- Conducted Face-to-Face
- 5 x 2hr Group sessions

Topical Parenting Workshops

It aims to support families in managing different challenges as parents communicate and relate with their children.

Modality:

- Shorter specially curated talks
- 1.5 hrs Parenting Talks/ Parent-Child Bonding Workshops

SCHOOL-HOME PARTNERSHIP

Join the Parent Support Group (PSG)!

- The PSG consists of a group of dedicated parents who partner the school to support fellow parents in nurturing their children.
- A platform for parents to network, share, learn and support each other in this parenting journey.
- Some PSG initiatives include:
 - Goodie bags for our P6 students
 - Decorations for festive celebrations



Why join Parents Support Group (PSG)?

1. Have an enjoyable time interacting with the students
2. Help teachers provide a more holistic education for students
3. Serve the school in meaningful ways
4. Network with other parents
5. Participate in various social and educational activities





Project Smile

**Bonding session-Making
lipstick!**

**Look at our fun
PSG activities!**



Our current parents with Alumni parents



Join the Parent Support Group (PSG)!

Have an enjoyable time
interacting with your children
and their schoolmates

Network with other parents

Participate in various social and
educational activities

Help teachers provide a more
holistic education for students

LIANHUA PRIMARY SCHOOL



IN UNITY, WE CARE

Parent Support Group

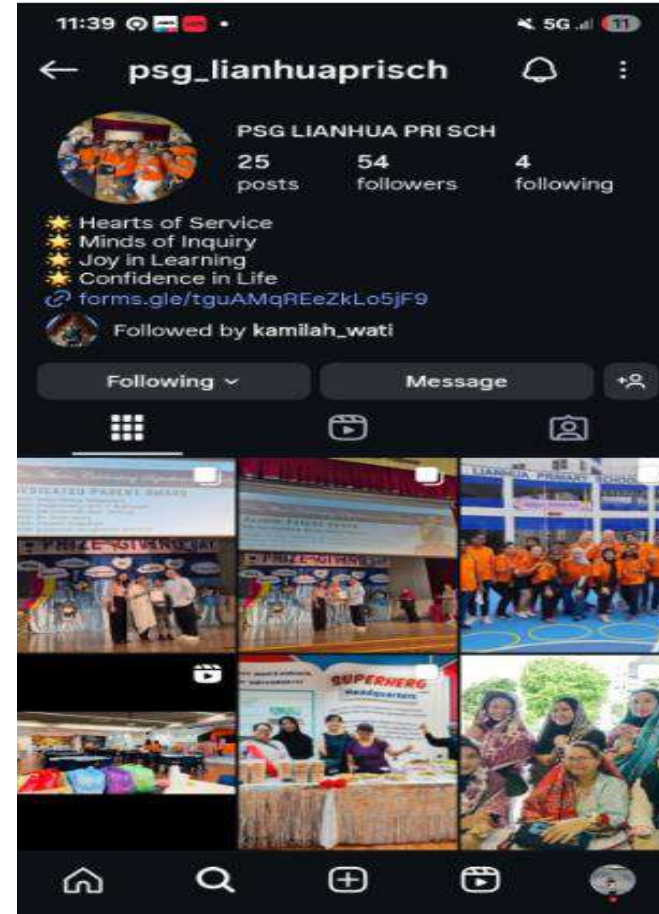


Scan the QR code to sign up now!

Do go to our Facebook and Instagram to find out more about LHPS PSG!



<https://www.facebook.com/lianhuaprimaryschoolpsg/>



https://www.instagram.com/psg_lianhuaprisch?utm_source=qr&igsh=MTJkbXYwdWQ2dzVqYw==



联
华
小
学

Lianhua Primary School

Welcome 2026 P1 Students



School Partners

Our Partners

External service providers



POSB (Smart Buddy watch)



School-Based Student Care (Big Heart)



Bus services



School Uniform



Textbooks & supplies



